



LMI[®]INDIA
PRECISION TO PERFECTION
An ISO 9001:2015 TUV Nord Certified Company

LaserScan[®] *- Measurement & Control*



Registered
supplier with:



एन. एस. आई. सी.
NSIC
ISO 9001 : 2008





Measurement & Control

LaserScan[®]

LaserScan[®] diameter gauges are legendary for their consistently accurate diameter measurements, minimal maintenance and extraordinary reliability. It works on Single Phase Supply at 12 watt stable power and ambient temperature of 45 degree celsius. It caters to few of the applications as under:



Capabilities

- High Accuracy • Easy to operate
- Various I/O • Remote display • Feedback Control
- Alarm • On Line/Off Line Applications
- Low ownership cost • Fast pay back

Unique Features

- Wires & Cables • Optical Fibre Cables
- Medical Tube • Tubular Glass
- Plastic Tube & Pipe • Metal Tube & Pipe
- Rubber & Plastic Hoses • Rod & Bar • Strip & Ribbon
- Rope & Wire Rope • Sleeves • Mono Filament
- Pins & Gauges • Metallurgy



Measurement Specifications

Model No.	LS8110	LS8130	LS8140	LS8180	LS8210	LS8220	LS8225	LS8240	LS8270	LS8290
Measurement Range	0.1-10	0.1-30	0.1-40	5-80	0.1-10	0.1-20	0.1-25	0.1-40	5-70	5-100
Measuring Precision	±0.001	±0.001	±0.001	±0.005	±0.001	±0.001	±0.001	±0.001	±0.1	±0.1
Scanning / Axis	600	600	600	600	1200	1200	1200	1200	1200	1200

* All Measurements in mm

Option for Control: ScanPro Controller with 4", 7", 15" touch display with built in Functions to maintain & Control in process application

FineScan

FineScan our diameter gauge series is known for its low cost and user friendly interface and has been specially designed for applications requiring OD Measurement of fine products such as :

- Wire Galvanizing & Enameling
- Monofilament
- Fly Fishing Line

Measurement Specifications

Measurement Range	0.02 to 1.00 mm
Measurement Precision	+/-0.0005 mm
Scan Rate	2000 Scans/sec.
Repeatability	+/- 0.0005 mm
Power Requirement	220 volt AC + /-5%
Ambient Temperature	Under 50°C

Capabilities

- High Accuracy • Alarm
- Easy to operate • On Line/Off Line Applications
- Various I/O • Low ownership cost
- Remote display • Fast pay back



Applications

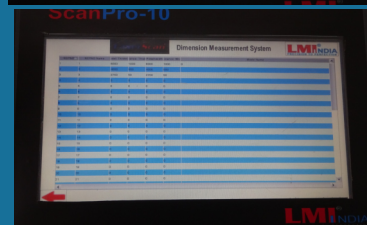
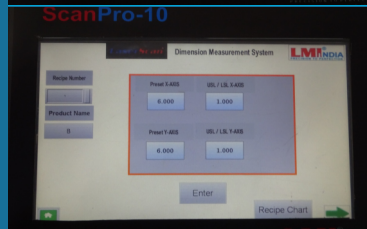
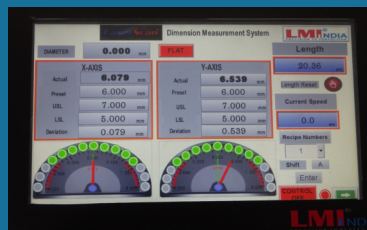




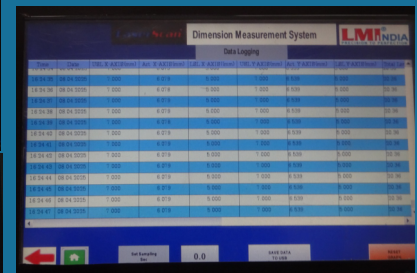
Measurement & Control

LaserScan[®]

Model	LaserScan [®] 8110-8180/8210-8290 with ScanPro 10/15
Application Type	Measurement and Data
Technology	Laser Scanning
Type	Single/ Dual Axis
Measuring Range (mm)	0.1- 100mm
Features	<ul style="list-style-type: none"> - Stable Light Source - High Quality Spot - Uniform Laser Density - Uniform Laser Output - High Speed - Compact Size - Stable Operation - Data Optimisation - Easy Set up - Simplified Operation
Scanning Rate	600/1200 Scan/sec
Measurement Precision (mm)	0.001-0.1
Repeat Precision (mm)	0.001
Power Supply	≤220V+/- 10%
Power Consumption	60w
HMI	10" Touch Screen
Principle of Operation	LaserScan Gauge employs Laser technology and principal of shadow measurement Measurement of solid/Hallow /Opaque/Translucent
Data Logging	System support logging of the data as defined by the custom
Communication Port	USB/ Serial/Ethernet/PS
Class of Safety Protection	IP 54
Laser Safety Level	4
Work Environment	Temperature : 0 - 45°C Humidity : 5% - 95% non-condensing water
Mounting Arrangement Control System	Adjustable Mounting Stand 10" Touch Screen Control System with Graphical Under Interface RAM :256 MB ,Storage :256 MB, Resolution: 1024 x 600 pixels, Display Range: 226 mm x 128.7 mm, Dimension:: 272 x 200 x 61mm
Main Frame Design	Aluminum Housing of Control Box Laser/Optics
Tools	A Set of tools included in the scope of supply
Language Support	English
System Upgrade	Free Upgrade of Software as & when released
Application	Static for off line applications
Weight	Approx. 40Kg



ScanPro - 10/15



LMI[®]INDIA
PRECISION TO PERFECTION

An ISO 9001:2015 TUV Nord Certified Company

LMI India (P) Ltd.

LMI Tower, B-95, Sector 8, Dwarka, New Delhi - 110 077, INDIA

Tel : +91 4566 7369/4993 3645/4993 2552 Email : info@lmiindia.com

Toll Free No.: 18008890626

Our Network: >Ahmedabad >Bangalore >Bhubaneswar >Chandigarh >Chennai >Gurgaon >Guwahati
>Hyderabad >Indore >Jammu >Jamshedpur >Jodhpur >Kolkata >Lucknow >Mumbai >Pune

WORKS

UNIT I

Khasra No 248, Road No 1, Village Bharthal
Sector 26, Dwarka, New Delhi - 110077

UNIT II

F-132, Sector -9, Phase-III
IMT Bawal, Haryana - 123501